



THORGANBY HALL



Accessibility Guide for Little Walk Cottage

emma@thorganbyhall.co.uk, <https://www.thorganbyhall.co.uk/properties/little-walk-cottage/>

Contact for accessibility enquiries: Emma Milligan-Manby



Welcome

Little Walk Cottage sits on the edge of the Thorganby Hall farmyard with delightful views through adjacent woodland to our lake and the rolling farmyard beyond. It is a superbly converted brick and pantile range of stables, incorporating original features and garden room. The cottage has its own driveway and plenty of garden space, including a terrace with a garden table, chairs and a brick barbecue. The garden is not fenced, there is ample parking and no passing traffic. Pets by arrangement for an additional small charge, with a maximum of two. Seasonal trout fishing by arrangement and of the owner's tennis court. Woodland walks and access to the local footpath and cycle network.

Watch the video: [Little Walk Cottage](#)

At a Glance

Level Access

- The main entrance has 1 step. There is no lift and no ramp.

Access with steps

- There are steps from the main entrance to:
 - Bedroom
 - Garden Room
 - Terrace

Bedrooms

- We have non-allergic bedding.

General

The accommodation is rated by the National Accessible Scheme as suitable for:

- Older and less mobile guests



Getting here

Little Walk Cottage
Thorganby Hall
Grimsby, Lincolnshire
DN37 0SR

Travel by public transport

- You can get to Little Walk Cottage by bus and train.
- The nearest bus stop is in Thorganby village, approximately 2 miles / 3.5 km from the cottage. The bus stop is 2.00 miles / 3.5 km from Little Walk Cottage.
- The nearest train station is Market Rasen. The train station is 11 miles / 17.7 km from Little Walk Cottage.
- Market Rasen Station is a small village station with car park. Wheelchair users can use car park equipment at this station unaided. No Ticket Office or machines.

Travel by taxi

- You can get a taxi with Links Taxi's by calling 01472 353535.
- If you will not be arriving by car please contact us directly for advice. Bookings and enquiries can be made via e-mail, fax or phone. Details on our website.

Parking

- We have a car park. The parking is less than 50 metres from the main entrance. Parking is free.
- There is a drop-off point at the main entrance. The drop-off point does not have a dropped kerb.
- From the parking to the main entrance, there is 1 step. There is no ramp and no lift. There is a driveway at the front of the cottage with ample parking. All cars can drop off at the entrance onto a spacious paved area. The driveway is gravel and slightly inclined. Parking is 2/3 metres from the entrance.

Arrival



Path to main entrance

- From the street to the main entrance, there is 1 step. There is no ramp and no lift.
- The path is sloped.



Main entrance

- The door is 1000mm wide.
- The main entrance has 1 steps.
- The main door is side hung and manual.
- When you arrive, we can help carry your luggage.
- Yes - prior arrangement would be required.
The entrance at the front has 1 step (16 cm high, 27 cm deep and 1 m wide) & The keyhole lock is 104 cm high.



Entrance (Side View)



Entrance



Entrance (Step)

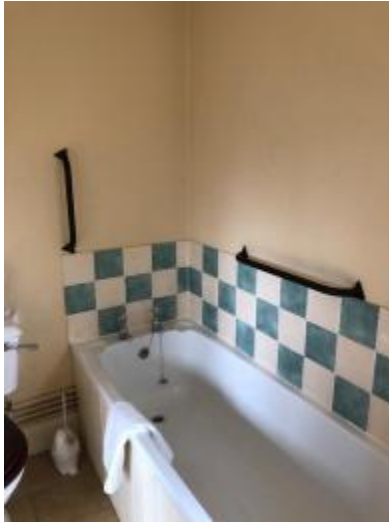
Getting around inside



Bedrooms

- All bedrooms have windows.
- Bedrooms have ceiling lights and bedside lamps.
- Lights are energy saving. Some lights can be controlled independently.
- All bedrooms are non-smoking.
- We have non-allergic bedding.
- All bedrooms have fitted carpets.
- We can give details of cleaning products on request. We can supply hypoallergenic bedding.
- We can move the bedroom furniture, to improve accessibility.
- No bedrooms have level access. The bedroom nearest the main entrance has 1 steps.

- We have bathrooms with a separate shower.
- We have bathrooms with a bath.
- The bath has a handrail. The direction of transfer onto the toilet is to the right.



Bath Handrail



Shower Handrail



Bathroom Handrail

Self catering kitchen

Open plan kitchen

- We have an open plan kitchen.
- From the main entrance to the kitchen, there is level access.
- The route is 1000mm wide, or more.
- The work surface is available with clear underspace and available at a height between 650mm and 900mm.
- The hob is available at a height between 650mm and 900mm.
- The sink is available at a height between 650mm and 900mm.
- The oven is available at a height between 650mm and 900mm.
- The table and plates have high colour contrast.
- The sitting room is open plan with the dining area and kitchen.
There is a rectangular table (moveable side to side) with legs on each corner, 62cm from floor to lowest point of table. It is 1.4m long, 0.89m wide and 0.76m high.
Free space between table and kitchen cabinets is at least 85cm all around.
The chairs are moveable. There are 4 chairs all with no arms. There is an additional chair with arms that can be moved to the dining table.
There is free space of 1.25m by 1m clear of doors and furniture, except between sofa and arm chair, but these are moveable.
Flooring is ceramic tiles with a rug, which is moveable, in front of the wood burning stove.



Open Plan Kitchen

Lounge

Open Plan Living Room

- There is one double sofa and two easy chairs, all with arms. Teletext TV provided with remote control. Also provided are DVD, stereo with CD, radio and tape all with remote controls. Flooring is ceramic tiles with a rug, which is moveable, in front of the wood burning stove.



Living Room



Living Room

Garden Room

- From the main entrance to this area, there are 4 steps. There is no lift and no ramp.
- There are four steps down into the Garden Room, with a pet/child gate which can be removed if necessary.

They are 93cm wide and there is a hand rail

1st step – 22cm deep, 16cm high

2nd step – 20cm deep, 16cm high

3rd step – 18.5cm deep, 15cm high and 185cm wide

4th step – 18cm deep, 16cm high space

There is 50cm around all furniture, but all furniture is moveable

Patio Doors leading on to the Terrace

There are 2 doors, each 65cm wide

The keyhole handle is 90cm high

The bolts are 182cm high.



Steps from Sitting Room into Garden Room



Handrail



Garden Room

Getting around outside

Terrace

Terrace

- From the main entrance to the terrace, there are 2 steps.
- Patio Doors leading on to the Terrace from the Garden Room.



Flag Stone Terrace



Flag Stone Terrace

Customer care support

Guide last updated: 31 March 2020